

EMI/EMC FILTER

TB6 SERIES



FEATURES

- 3-Phase Filters(Potted with Epoxy Resin)
- Remarkable attenuation for high voltage impulse
- Good shield effect by using metal case.
- Excellent filtering characteristics for both differential mode and common mode.

APPLICATIONS

- Industrial equipment such as CNC Machine, Inverter, Converter, Telecommunication equipments, FA equipments Elevator.

SPECIFICATIONS

Model	Rated Voltage AC [V]	Rated Current	Voltage Drop Max [V] (Each Phase)	Temperature Rise [°C]
TB6-B040As	3ΦX 440	40	1.0	50
TB6-B060LAs		60		
TB6-B080LAs		80		
TB6-B100LAs		100		
TB6-B150LAs		150		
TB6-B200LBs		200		
TB6-B250LBs		250		
TB6-B400LBs		400		

- Many variations in X and Y capacitor value are available with approvals.

For the details, consult with local agent.

Note: Test Voltage: 3000V DC for 1 minute, line to earth

2100V DC for 1 minute, line to line (without Resistor)

Insulation Resistance: 300 MΩ minimum at 100V DC, line and ground.

Weight: 2.2Kg for TB6-B040As

4.5Kg for TB6-B060LAs/B080LAs

4.3Kg for TB6-B100LAs

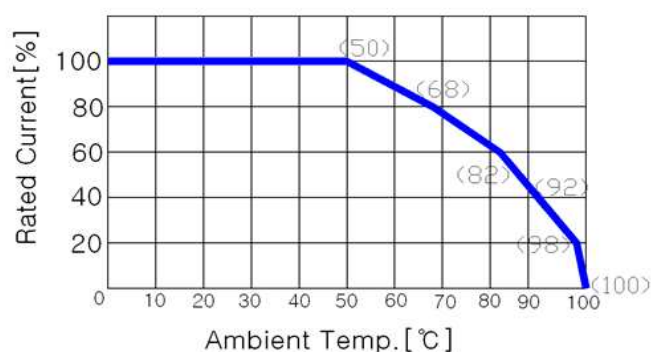
6.0Kg for TB6-B150LAs

8.2/8.5Kg for TB6-B200LBs/B250LBs

12.2Kg for TB6-B400LBs

Ambient Temperature Range: -25°C to +50°C max

Storage Temperature Range: -25°C to +100°C



Model Number Construction

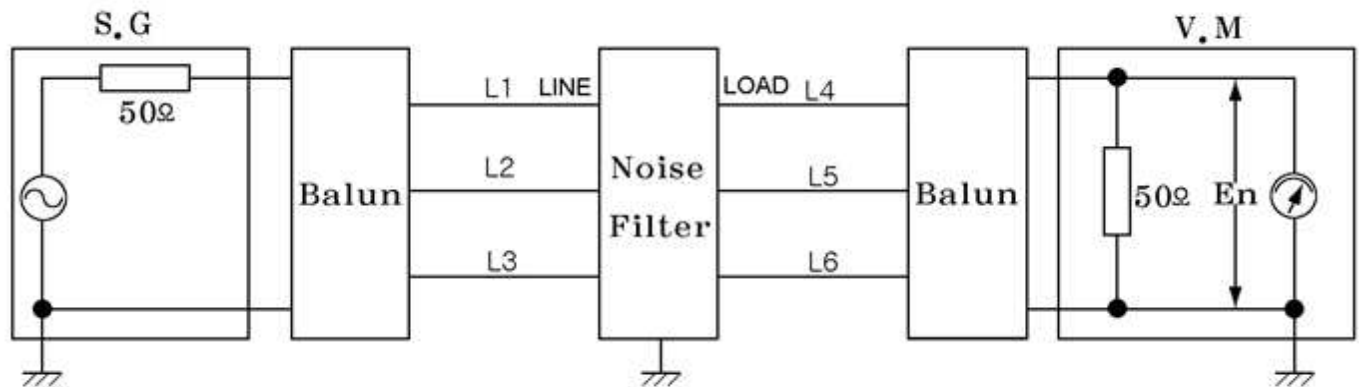
TB6-
|
Series name
(3Phase, 3Line Filter)

B
|
Input/Output
(B = Terminal Block)

040
|
Rated Current
040 = 40 A
060 = 60 A
080 = 80 A
150 = 150 A
200 = 200 A
250 = 250 A
400 = 400 A

LAs
|
Circuit Stage
LAs = 1 Stage
LBs = 2 Stage

● Attenuation Measuring Method



OSC Level: 0 dB

Insertion Loss = $-20\log(E1/E2)[dB]$

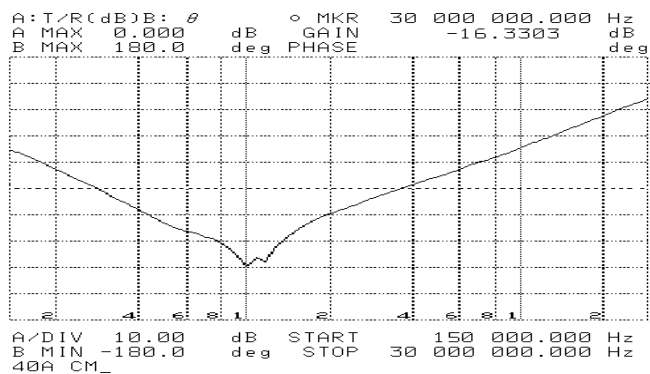
E1 : Level with the Noise Filter in the circuit.

E2 : Level without the Noise Filter in the circuit.

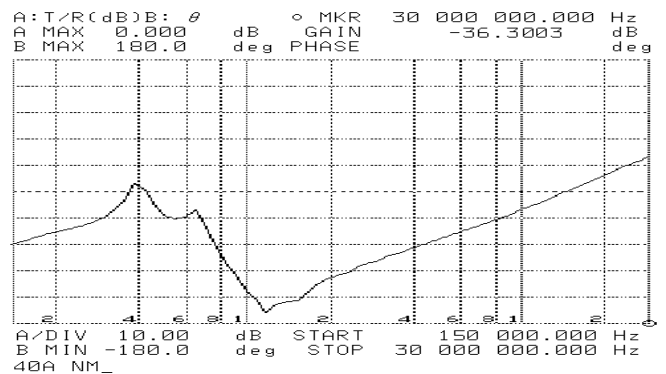
● Attenuation Characteristics

TB6-B040As

COMMON MODE

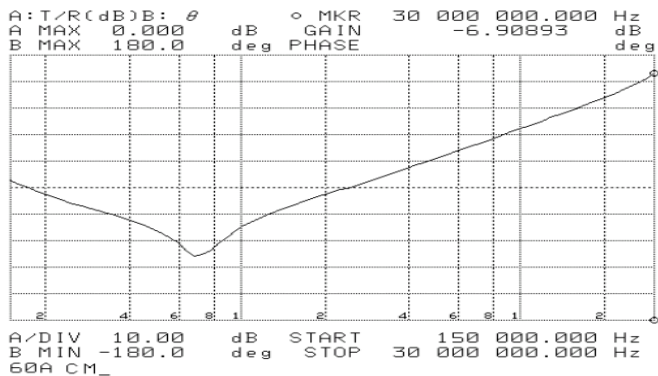


NORMAL MODE

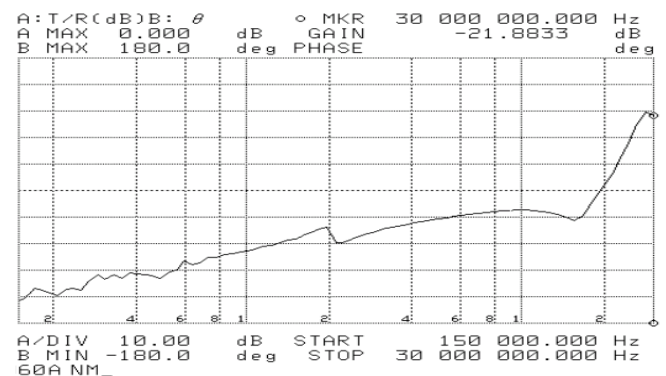


TB6-B060LAs

COMMON MODE

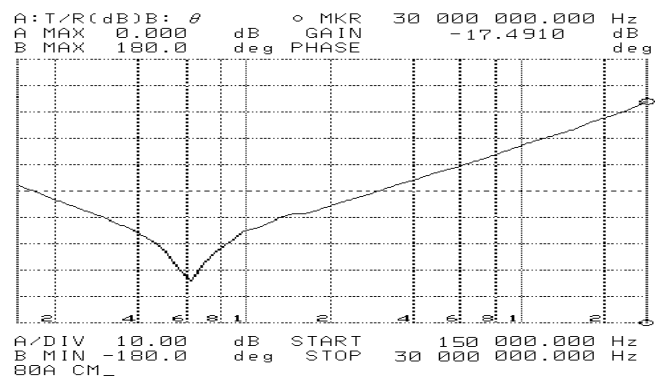


NORMAL MODE

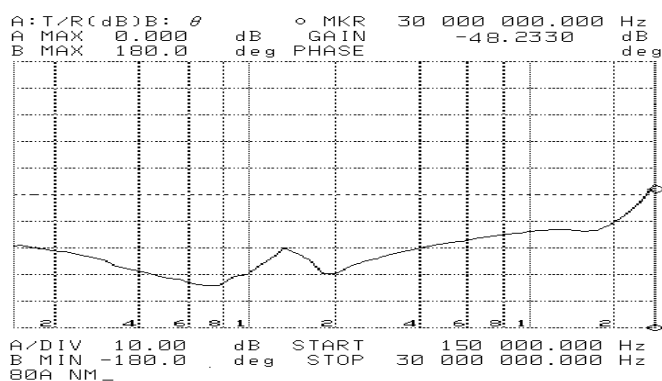


TB6-B080LAs

COMMON MODE

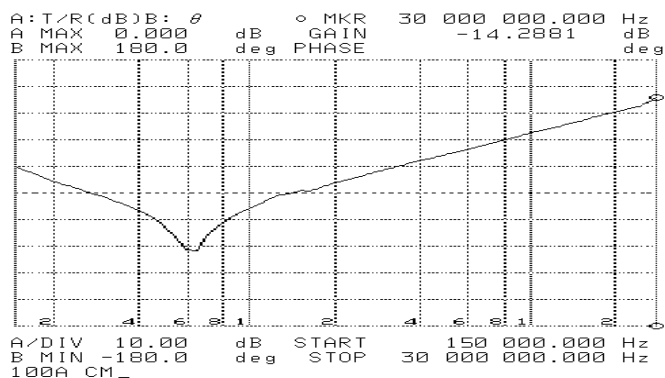


NORMAL MODE

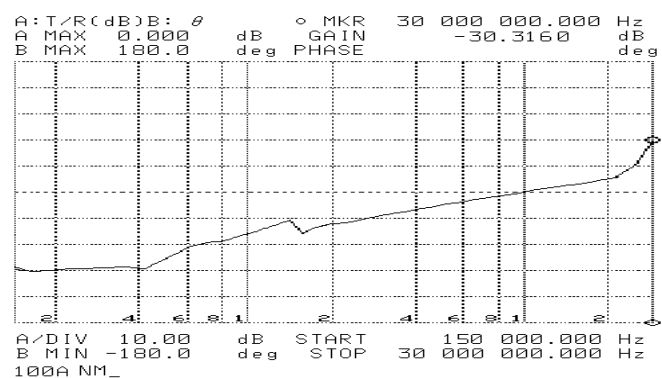


TB6-B100LAs

COMMON MODE

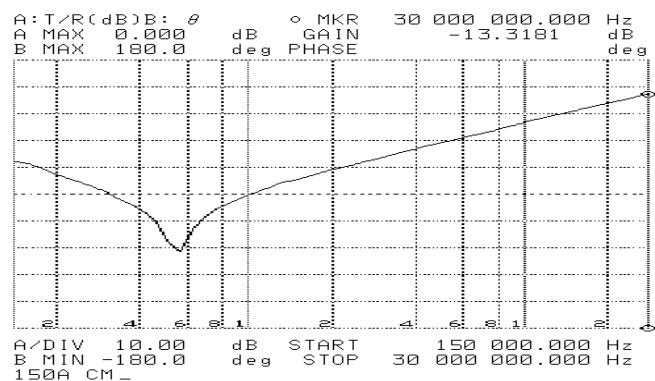


NORMAL MODE

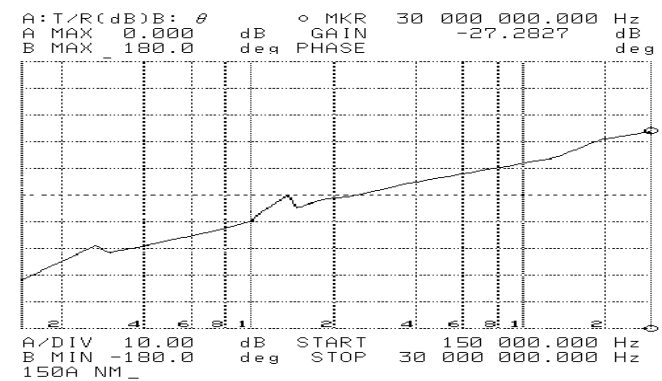


TB6-B150LAs

COMMON MODE

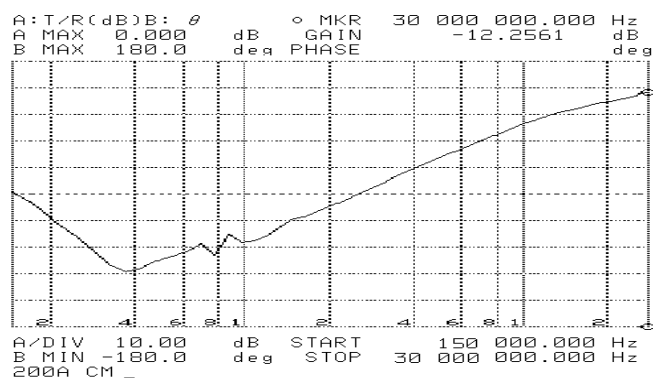


NORMAL MODE

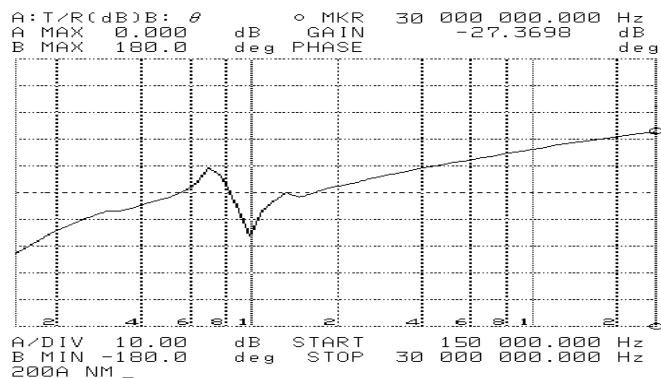


TB6-B200~250LBs

COMMON MODE

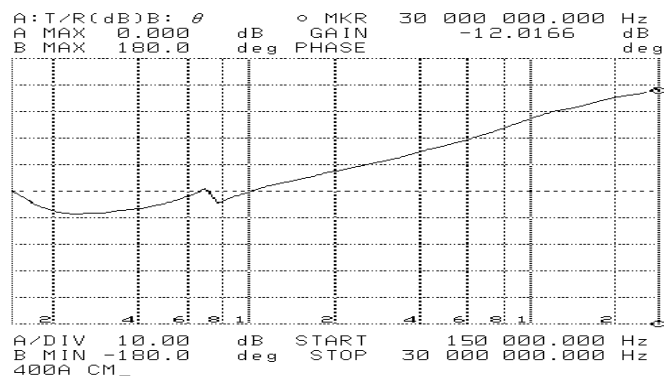


NORMAL MODE

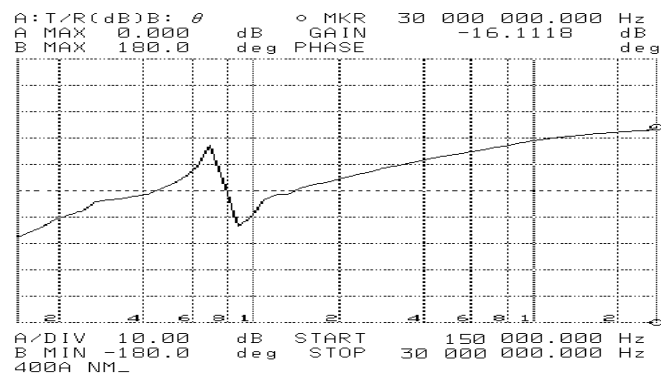


TB6-B400LBs

COMMON MODE

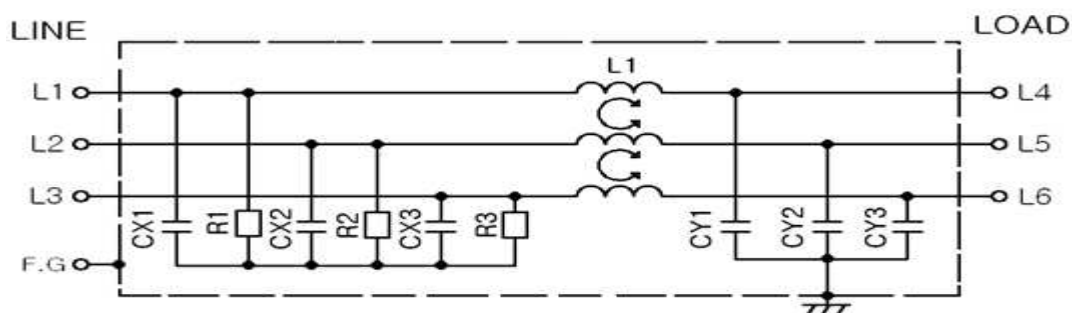


NORMAL MODE

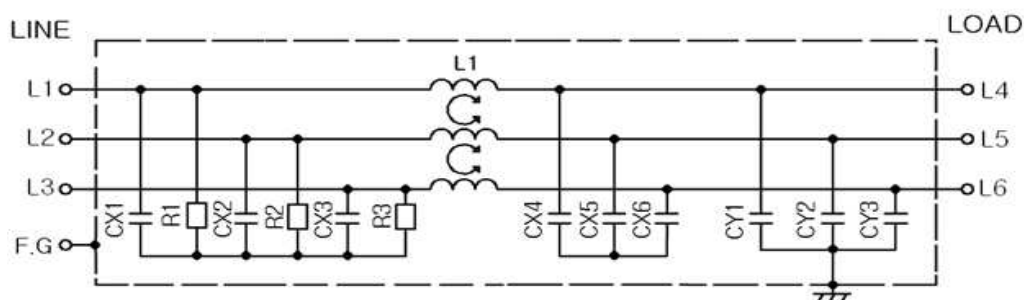


● Circuit Diagram

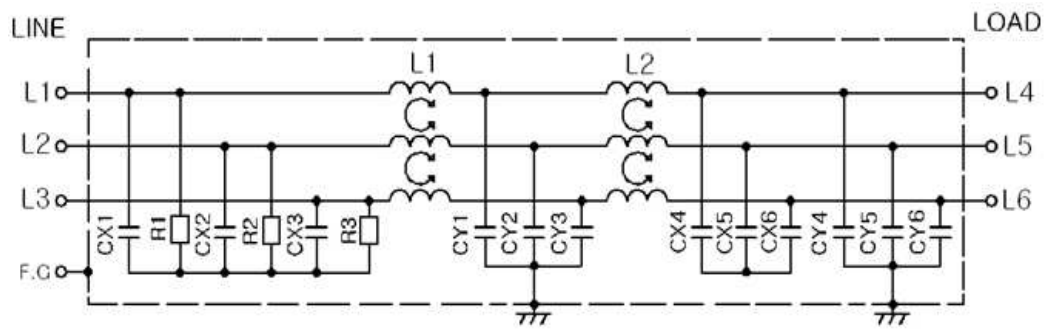
Only TB6-B040As



TB6-B060LAs ~ TB6-B150LAs

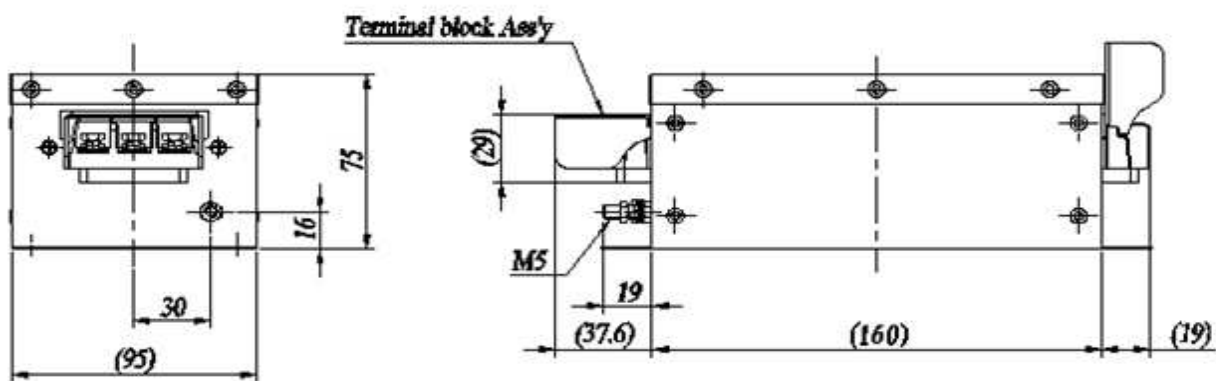
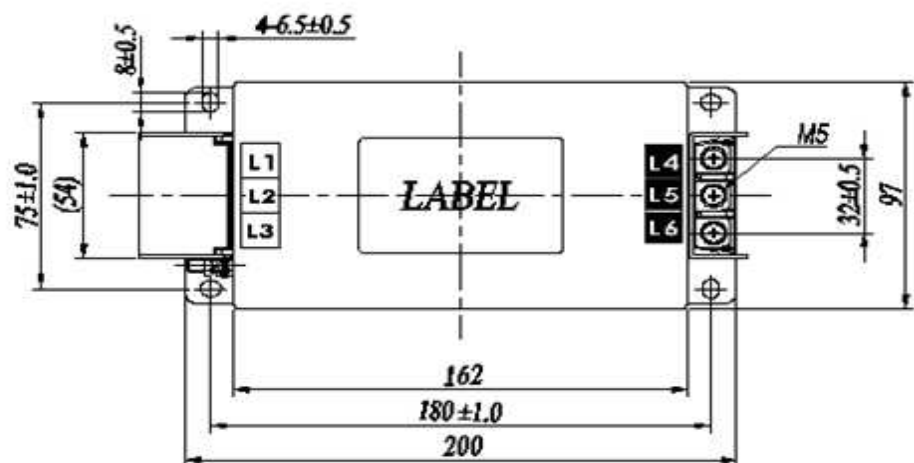


TB6-B200LBs ~ TB6-B400LBs

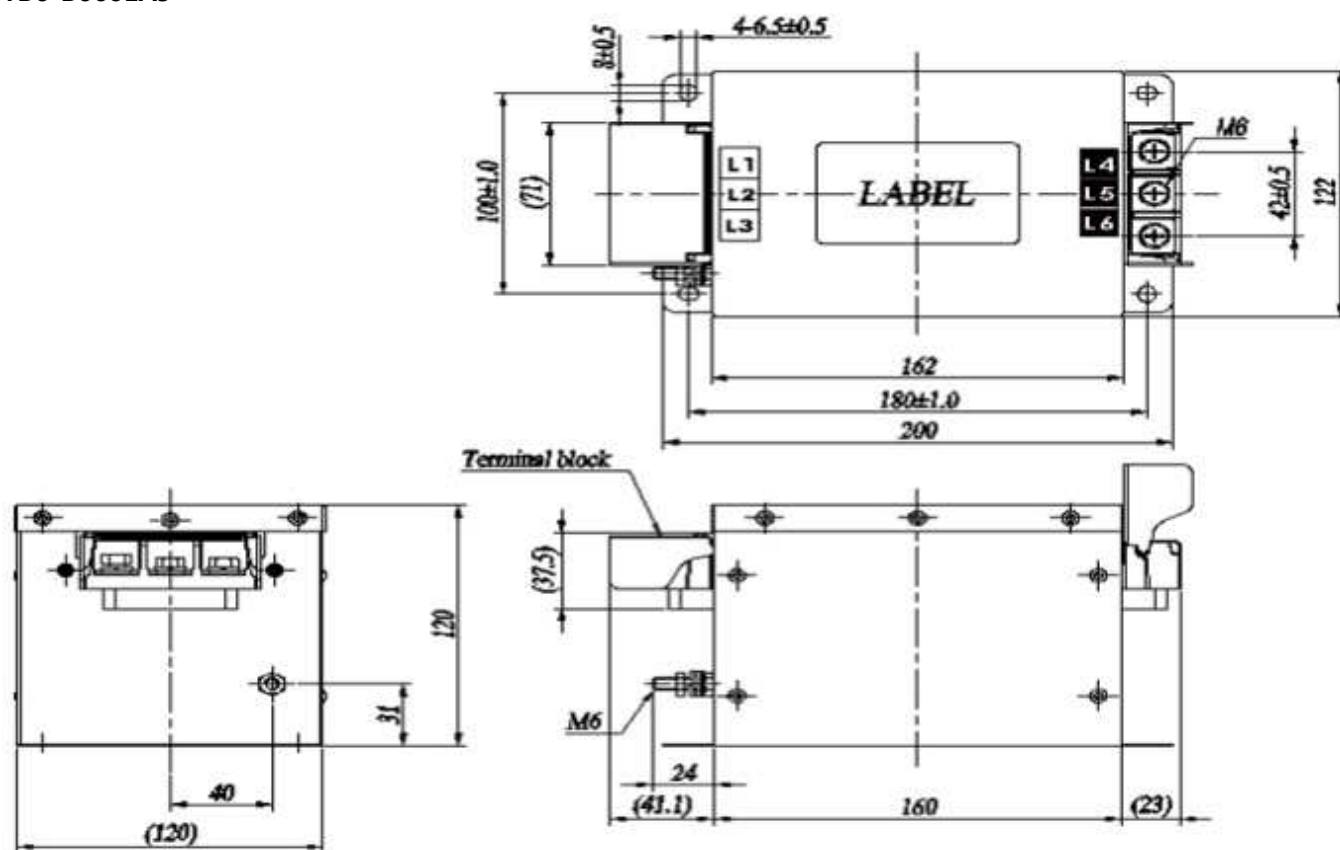


● Shapes and Dimensions

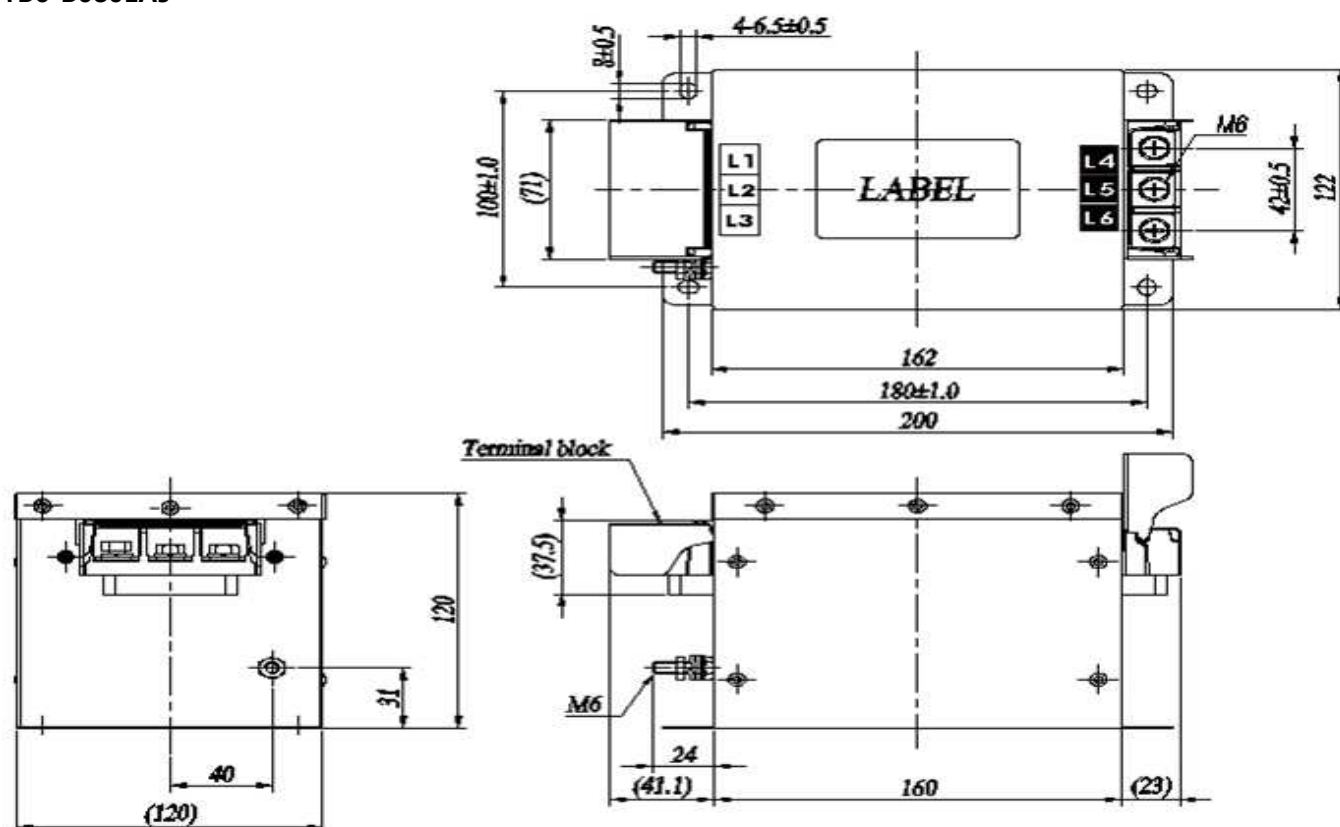
TB6-B040As



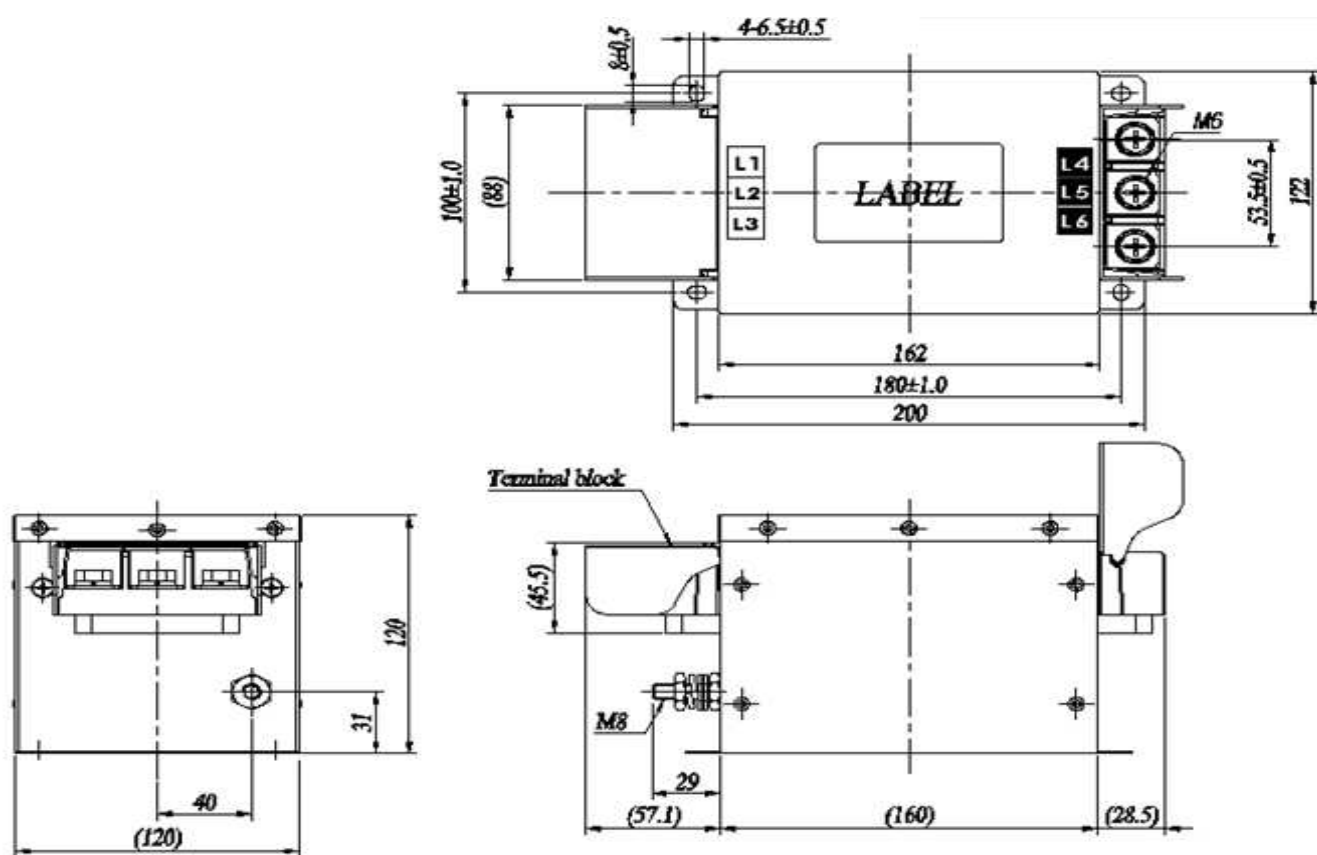
TB6-B060LA5



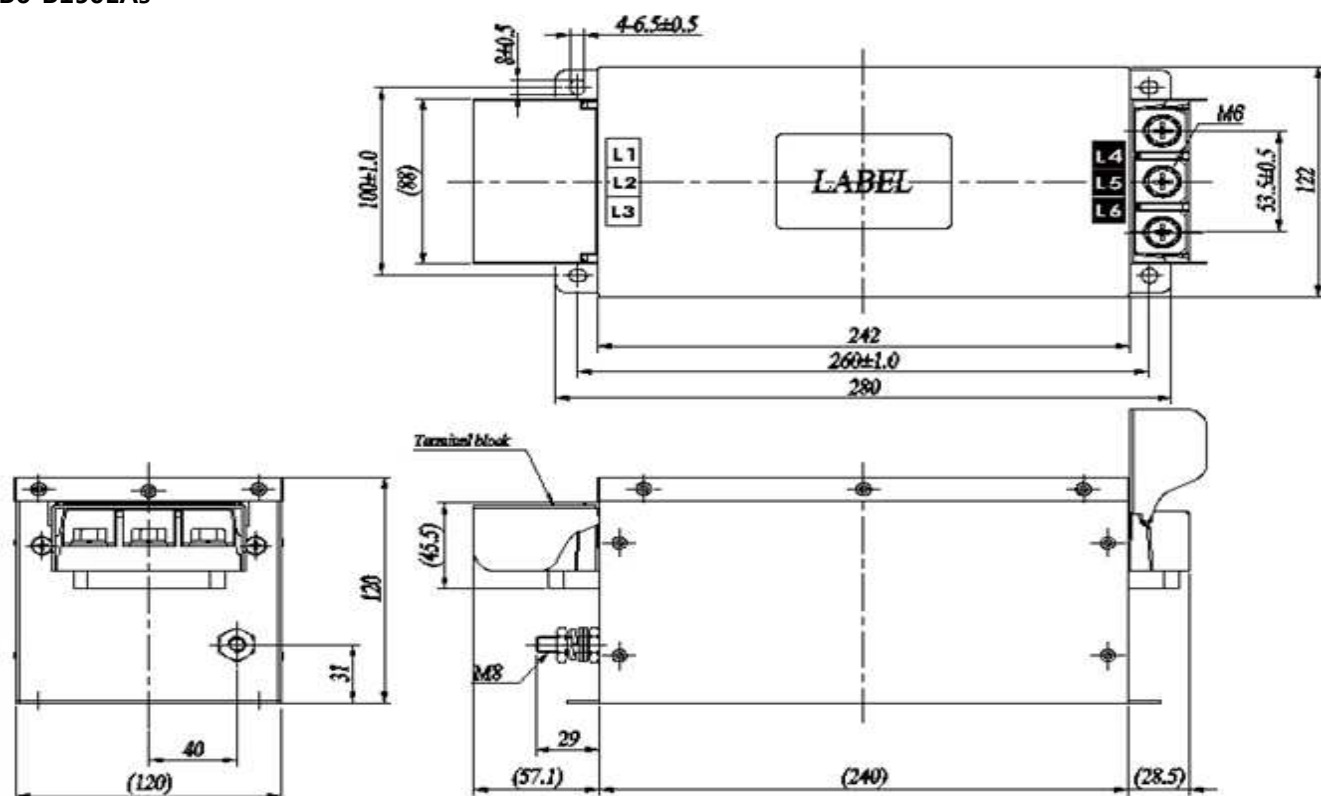
TB6-B080LA5



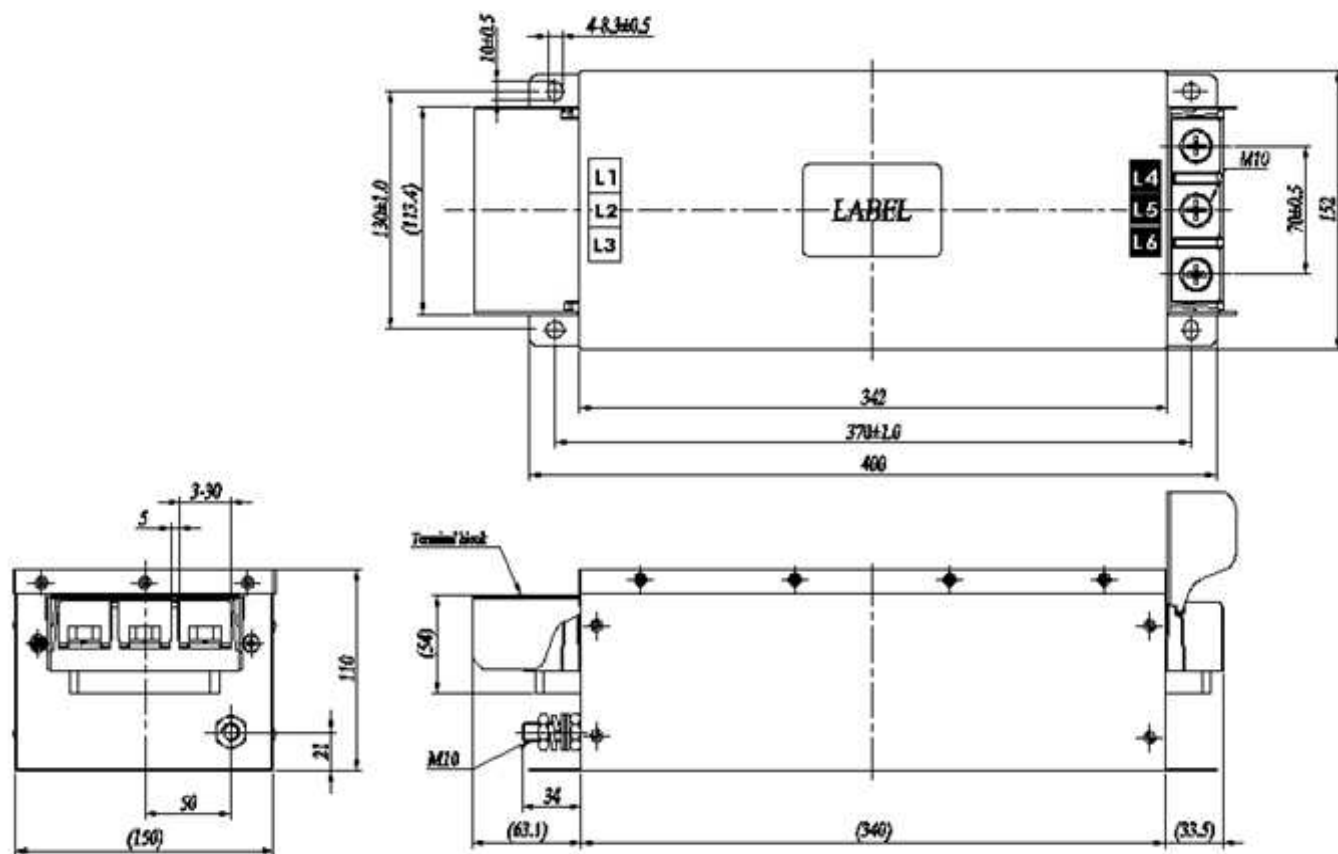
TB6-B100LA_s



TB6-B150LA_s



TB6-B200LBs



TB6-B250LBs

