

GHOPC is a one pole parallel device designed to by-pass thiristor of soft-starter or resistance for pre-charging capacitor.

This device can only make and break the current across the terminal of the turn-on thyristor or resistance after the charging time of capacitor.

GHOPC is designed to be a carry-only device with minimum internal resistance in order to have a low consumption of energy on the main contact and generate less heating respect a standard contactor.

The products are RoHS compliant and all the plastic material are UL approved.

Type	Current rating		
Control voltage *	200 A	410 A	600 A
110-120 Vac / 97Vdc (A)	GHOPC-200 A	GHOPC-410 A	GHOPC-600 A
220-240Vac / 196Vdc (B)	GHOPC-200 B	GHOPC-410 B	GHOPC-600 B

* Other control voltage available

Main characteristic

Applicable standard:

IEC 60947-4-1 sequence 1

verification of temperature rise

verification of operation and operating limits

verification of dielectric properties

Type	GHOPC-200	GHOPC-600	GHOPC-600
Ith [A]	200 ⁽¹⁾	600 ⁽¹⁾	600 ⁽¹⁾
Ui [V]	690		
Uimp [kV]	Main	6	
	Control	4	
Overload withstand capacity	8xIn for 100ms		
Mechanical durability	10 ⁶ operations		
Electrical durability	4x10 ⁵ operations		

(1) Up to 60°C by derating of current of 2%/°C and by reducing the coil voltage to 35%.

A separate feeder group for this purpose should be supplied on request

Operating temperature range	-25+40°C ⁽¹⁾
Storage temperature range	-55+80°C
Pollution degree	3
Weight [kg]	1

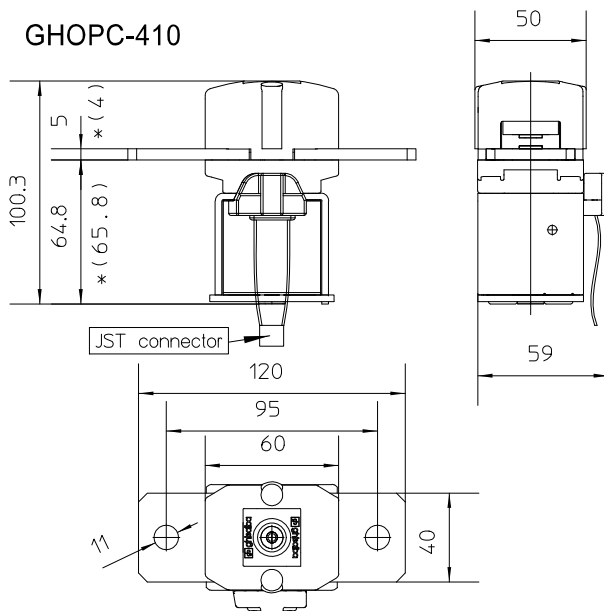
Control voltage	Pick-up	85%<Uc<110%
	Drop-out	10%<Uc<75%
Consumption [W]	In-rush	13.5
	Sealed	min. 1.7

Overall dimension

No fixing (standard version)

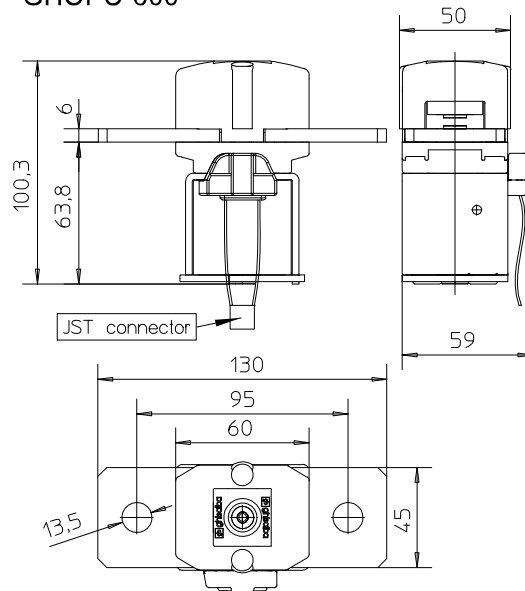
GHOPC-200

GHOPC-410



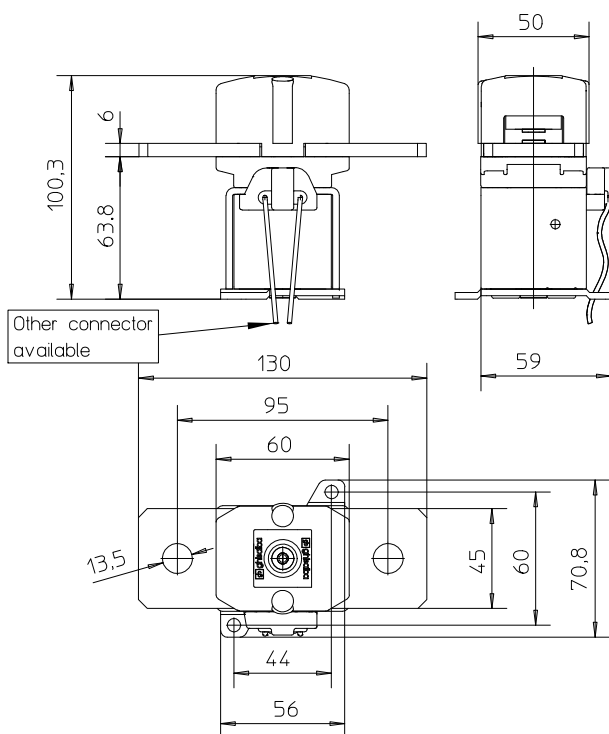
* For GHOPC-200 only

GHOPC-600



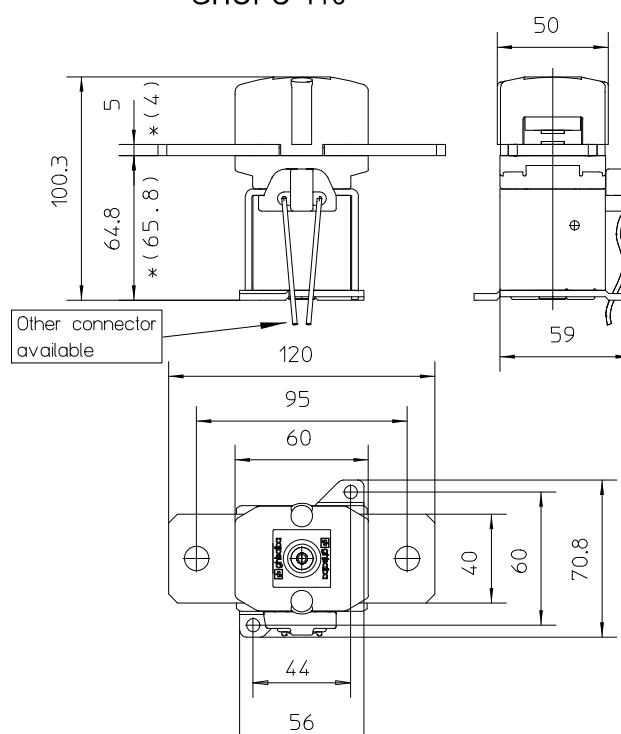
With fixing holes (on request version)

GHOPC-600



GHOPC-200

GHOPC-410



* For GHOPC-200 only